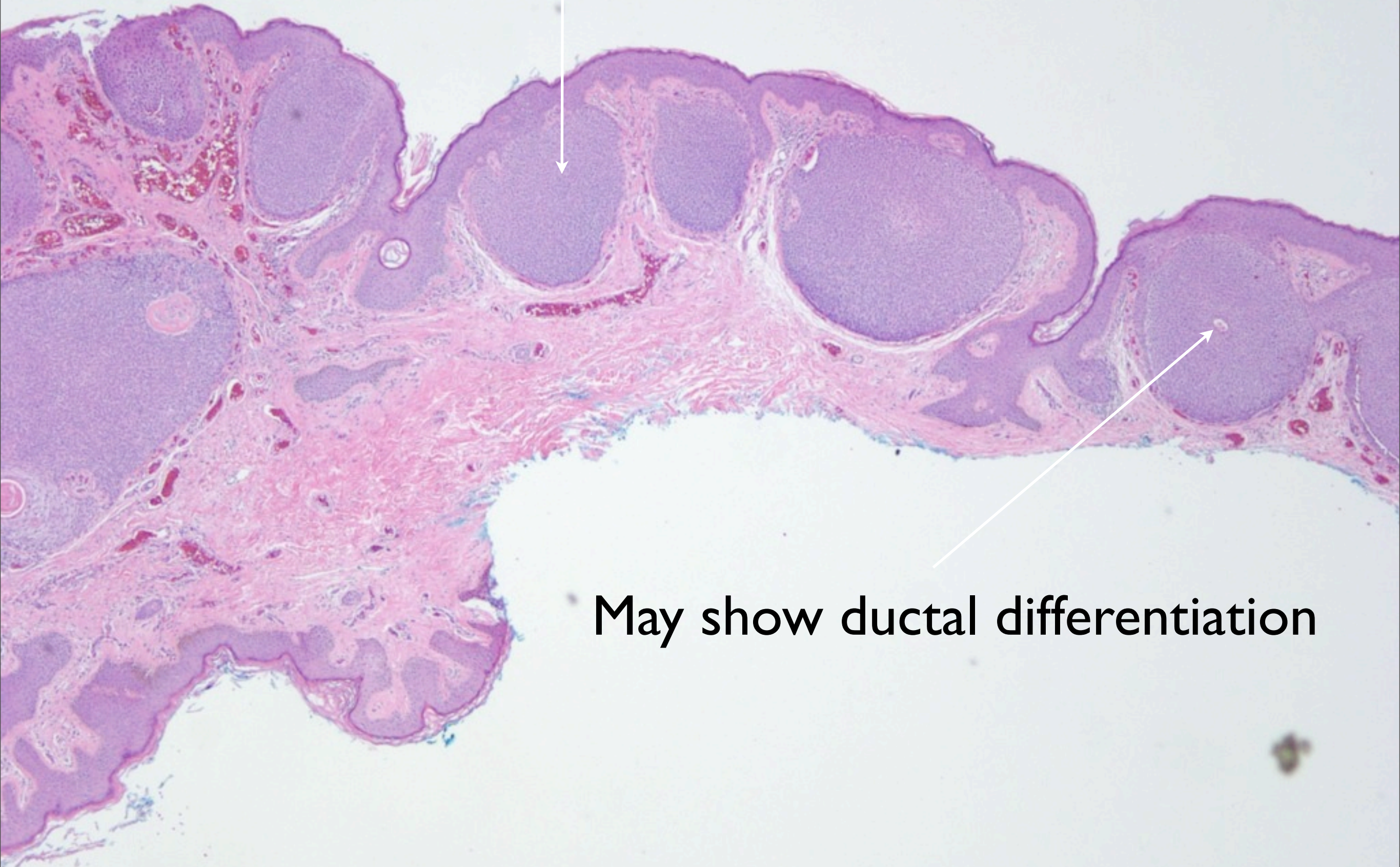


Hidroacanthoma Simplex

Notes

- This is essentially an intraepidermal variant of an eccrine poroma
- It illustrates the Borst-Jadassohn phenomenon of a clonal-like intraepidermal expansion
- This may be seen in many conditions including seborrheic keratosis and Bowen's disease

Circumscribed intraepidermal collection of keratinocytes



May show ductal differentiation